



## **Little Learners**

Early Childhood Center

*Making Memories, Marking Milestones*

### **Disaster Plans**

#### **Fire Plan**

1. The supervising staff member(s) will direct all children to line up at nearest, safest exit.
2. Children will exit the building with the staff member(s) and go to the street light at the far end of the parking lot.
3. The supervising staff member(s) will call 911 on a cell phone. If a cell phone is not available, the staff member(s) and children will walk to the adjacent building and 911 will be called from there.
4. Parents will be called to come and get their children.
5. Monthly fire drills will be conducted to practice the fire plan.

#### **Tornado Plan**

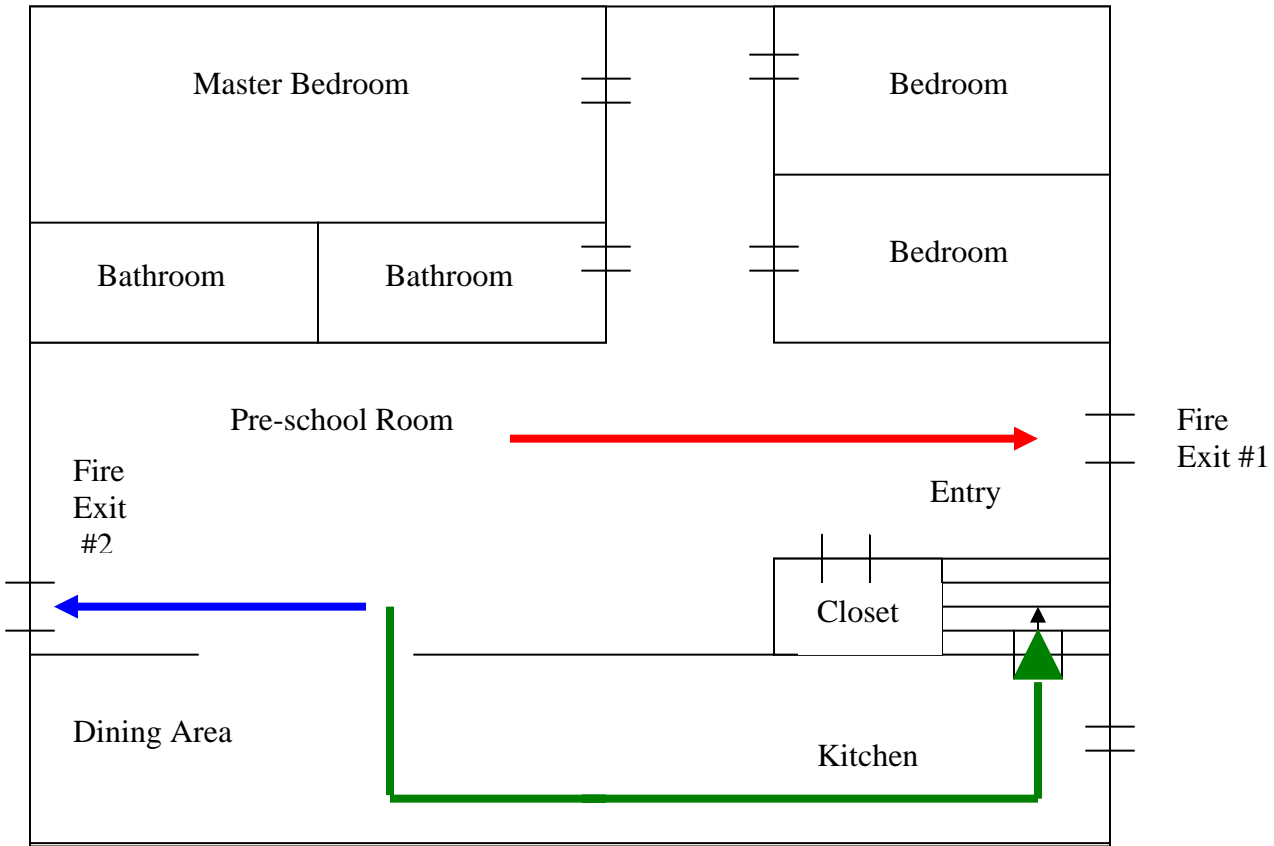
1. The supervising staff member(s) will take the children to the basement in the event that the tornado sirens sound or a tornado warning is issued over the weather radio.
2. Children will be taken to the north wall.
3. Children will get in a protected position by crouching down and covering their heads with their hands.
4. The supervising staff member(s) will take the children back upstairs when an "all clear" is issued.
5. If there is storm damage to the building, parents will be called as soon as it is safe to pick up their children.
6. Monthly tornado drills will be conducted to practice the tornado plan.

#### **Severe Storm Plan**

1. Battery operated flashlights are available in the event that electrical power is lost.
2. A battery-operated weather radio will be used to monitor severe weather.
3. The supervising staff member(s) will take the children to the basement, if warranted, due to severe weather.

#### **Serious Injury Plan**

1. The supervising staff member will check the injury, call 911 (if necessary), and administer appropriate first-aid.
2. Supervision of other children will be provided by another staff member on duty.
3. Parent will be notified.
4. The supervising staff member will take the injured child and all paperwork to get medical attention. (If a parent is not immediately available, then a staff member will ride in the ambulance with the child.)
5. The supervising staff member will complete an injury report and send it to the Johnson County Health Department by the next working day.




  
**Little Learners**  
 Early Childhood Center  
*Making Memories, Marking Milestones*  
  
**Disaster Plans**